

PATIENT GUIDE

Unexpected G-Tube Replacement Instructions

Balloon Type Tube (Mic G-Tube or Button) Less than 3 months since initial surgery

If the G-tube falls out **it is NOT generally an emergency**. It is like having newly pierced ears. The earrings have to stay in place for a certain period of time so that the hole stays open when the earring is removed; the G-Tube tract is the same. **It won't close up instantly** but the tube needs to be replaced **relatively soon** after the G-Tube falls out (**30 minutes - 1 hour**). Otherwise your child may require more surgery to replace it.

******* TAKE SEVERAL DEEP BREATHS! IT WILL BE OKAY.*******

1. If you have a replacement Mic G-tube, follow steps 2-10.
2. Fill syringe with 3cc (or 3 mL) of tap water.
3. Open the Mic G-tube (long clear balloon tube with external silicone bolster. See Image A).
4. Loosen the silicone bolster PRIOR to inserting it into your child.
 - If you are unable to insert the Mic G-tube fairly easily or do not have a replacement, you may also use the 10 FR Foley (See Image B) catheter instead. ****This is located in your green Upstate HomeCare bag.*****
 - Be sure to attach the Corpak Y extension tubing (clear tube with orange ends) first (See Image C). Be sure to close the caps on the feeding ports and lock the white clamp (See Image C) to prevent leakage of stomach content/feeds.
5. Lay your child down and make sure your child's abdomen area is flat. You may need to put a rolled towel/pillow under their lower back.
6. Gently insert the balloon end of the catheter into the opening where the G-tube fell out, about 2 - 3 cm (1.5 inches).
 - Note: If you are unsure, it is better to place the catheter in slightly farther than needed rather than not enough, to ensure the balloon is not inflated in the G-tube tract.
7. Inflate the balloon with the 3cc (or 3 mL) of tap water, detach the syringe while holding plunger down, otherwise the water will come back into the syringe.



Image A: 12 FR Mic G-Tube

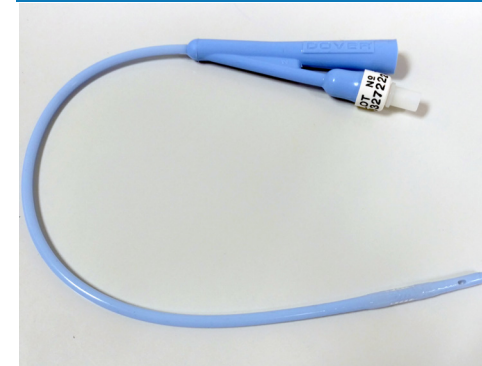


Image B: 10 FR Foley (Blue Tube)

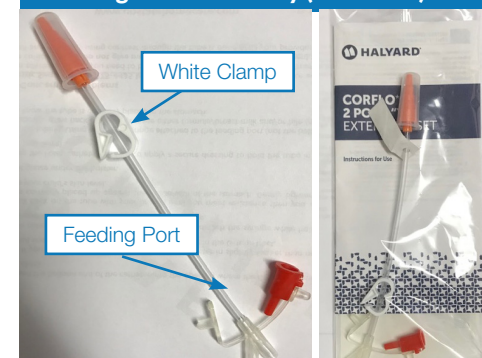


Image C: Corpak Y-Extension Tubing Set

8. Gently pull back on the tube with your fingers until you meet resistance then you will know the balloon is correctly placed up against the inside wall of the stomach. Gently tighten the silicone bolster to your child's skin level.
9. Place split gauze under the bolster and secure tube.
 - If using the Foley catheter, be sure to apply a secure dressing to hold the tube in place (see Image B).
10. Unclamp the white clamp on the tubing. Attach an empty syringe to the feeding port (not the balloon port; see pictures above), draw back gently. If you see either formula/breast milk and/or bile (gastric yellow) then you know the tube is correctly placed in the stomach.

Questions, Concerns or Problems

Call your physician immediately (after hours answering service available). **Do not give medication/formula** through the replacement tube or by mouth until your physician says it is okay.